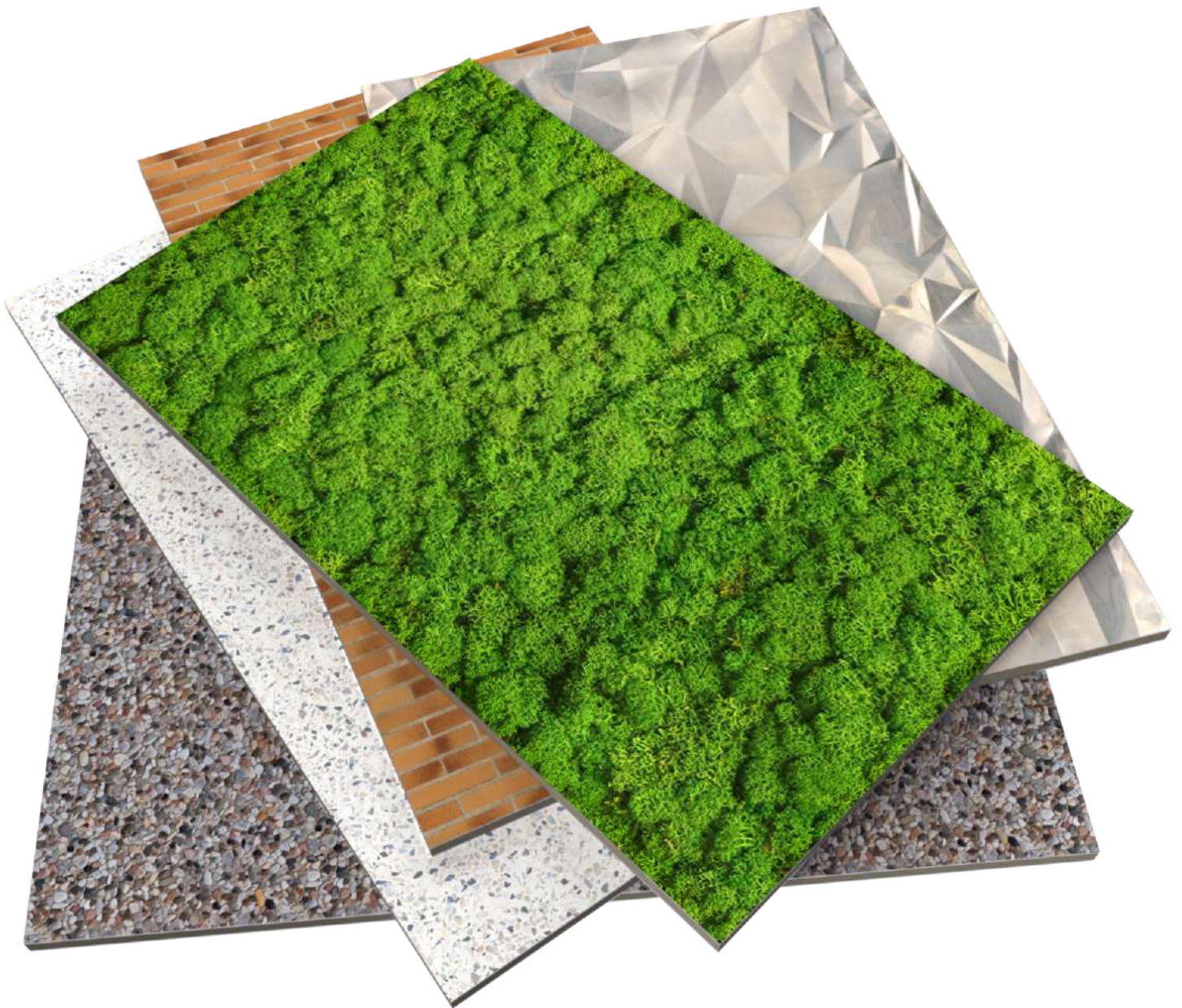




#HASHTAG COLOUR CHART

Metallic panels for lightweight architectural envelopes



larson® & larcore® A2

Metallic panels for lightweight architectural envelopes



#HASTHTAG COLOUR CHART

larson® and **larcore® A2** panels coated with Digital Printing Surface technology mimicking bricks, stones, concrete, grass, gardens and metallic finishes.

These finishes are applied over these panel ranges:

a) **larson® 4 mm aluminium composite panel** with aluminium skins thickness of 0.5 mm:
5000x1500 mm, 5000x1250 mm, 4000x1500 mm and 4000x1250 mm.

b) **larcore® A2 14 mm aluminium honeycomb panels** with aluminium skins thickness of 1 mm:
1500x5000 mm and 1500x4000 mm.

(For projects over 200 m², other lengths and widths).

“Choose your idea and we build it”

Unlimited finishes options for "ad hoc" projects, with detailed study of each case

Specific considerations

1. **Alucoil®** recommends digital printing on already machined material. Otherwise, it must be expressly communicated.
2. For the correct performance of the project, follow the recommendations set out in annex I **GUIDE FOR DESIGN MANAGEMENT**.
3. A T-bend > 2 must always be respected when folding the **larson®** or **larcore® A2** panel.
4. In the case of folding after applying digital printing, whitening effect may occur in the folded area, characteristic of digital printing.
5. Easy graffiti cleaning.

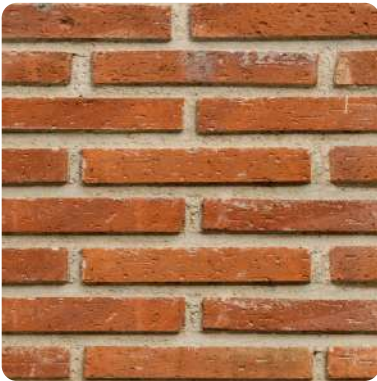
PROPERTIES

1. Coating thickness. (EN 13523-1) → From 90 to 115µ approx. (Tolerancies according to Norm UNE-EN 1396). (Definite setup depends on actual colour).
2. Specular gloss topcoat. (EN 13523-2) → Gloss measured by 60° Gardner: 20 uo to 40 g.u. (Tolerances according Norm UNE-EN 1396)
3. Colour differences topcoat. (EN 13523-3) → According to Norm UNE-EN 1396. (To ensure colour consistency, the total requirement of the project should be placed in a unique order).
4. General visual appearance. Inspected at 5 m distance an angle 90° → Free from flow lines, streaks or other surface imperfections. Finishes sensitive to direction, sense and angle of installation
5. Pencil hardness. (EN 13523-4) → ≥ F
6. Cross-cut test. (EN 2409) → Class 0
7. Cross-cut test + humidity resistance. (EN 2409 + ISO 9227) → Class 0

Digital Printing Surface

#HASHTAG COLOUR CHART

Metallic panels for lightweight architectural envelopes



Hashtag Red Brick 20G
ES3176



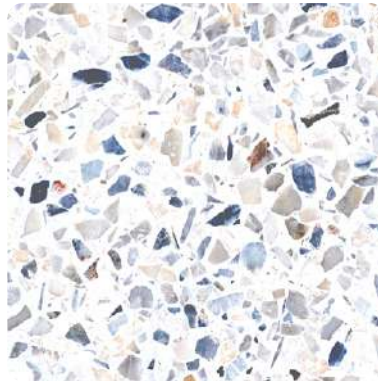
Hashtag Brown Brick 20G
ES3177



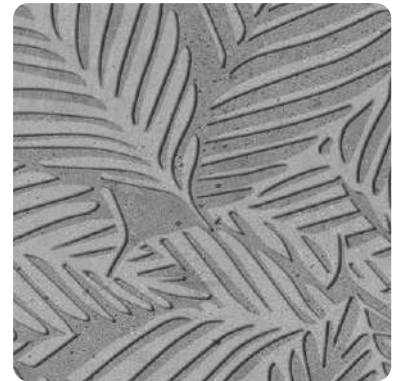
Hashtag Cream Brick 20G
ES3178



Hashtag Pebbles 20G
ES3179



Hashtag Granite 20G
ES3180



Hashtag Grey Concrete 20G
ES3181



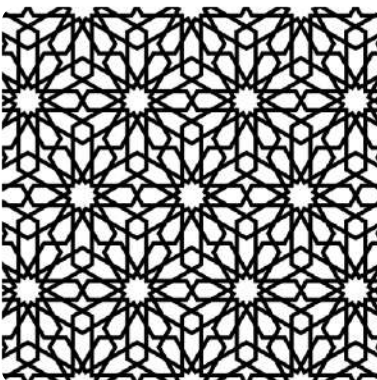
Hashtag Grass 20G
ES3182



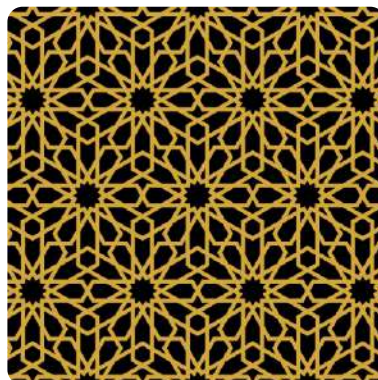
Hashtag Garden 20G
ES3183



Hashtag Diamond Gold 20G
ES3195



Hashtag ARAB WHITE
White Back/Black Star 20G
ES3185

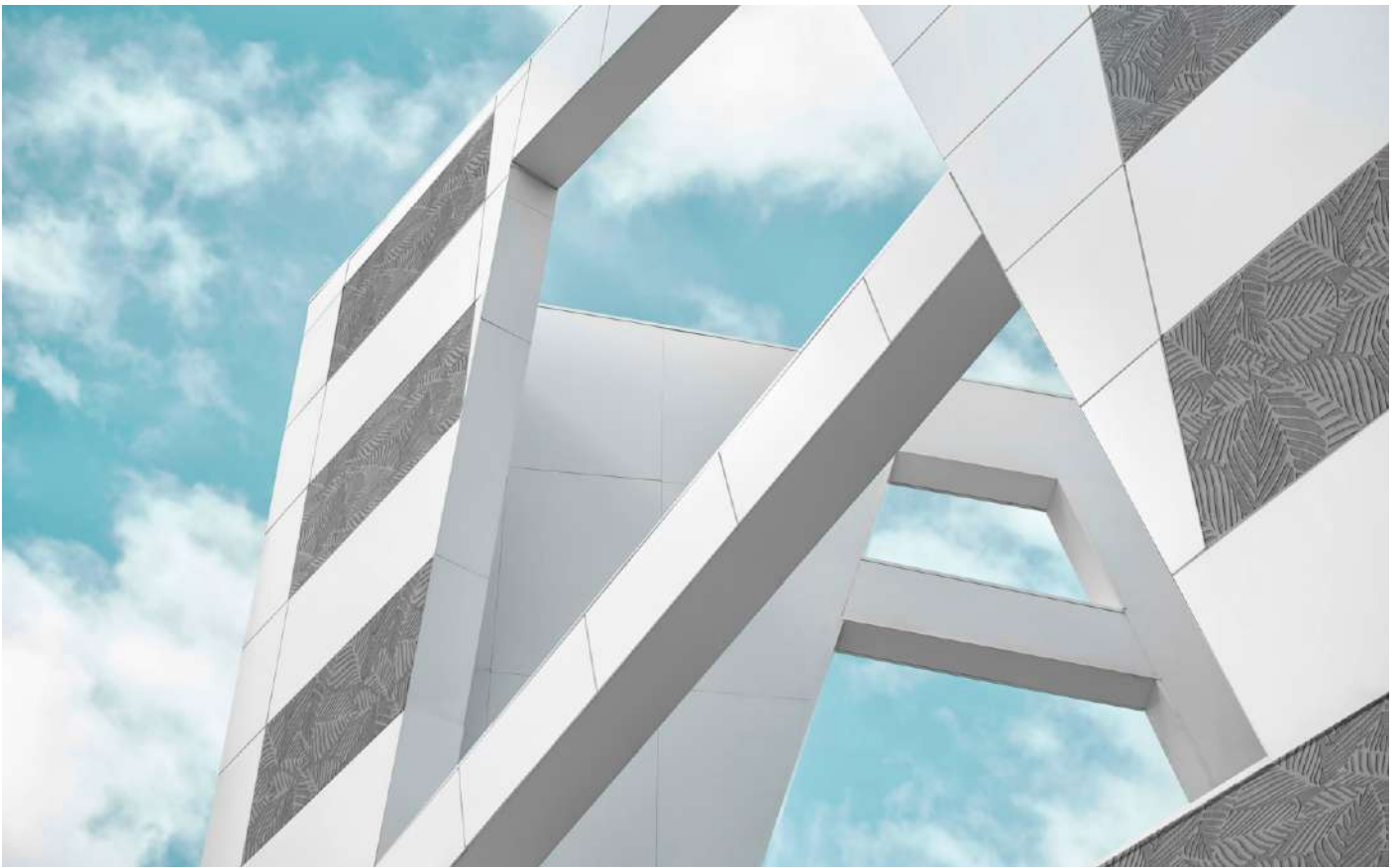


Hashtag ARAB GOLD
Black Back/Gold Star 20G
ES3186



Hashtag Diamond Silver 20G
ES3196

larson® FR
larcove® A2
#HASHTAG COLOUR CHART





#HASHTAG COLOUR CHART

larson® FR & larcore® A2
Metallic panels for lightweight architectural envelopes



GREEN THINKING
SMART PRODUCTS FOR SMART CITIES



Alucoil[®]

Grupo Alibérico

Polígono Industrial de Bayas C/ Ircio parcelas R72-77

09200 Miranda de Ebro - Spain

Tel.: +34 947 333 320

info@alucoil.com

www.alucoil.com

Alucoil[®] S.A.U. reserves the right to change or remove information contained in this brochure without prior notice.
Please visit us at **www.alucoil.com** to check the latest version.